

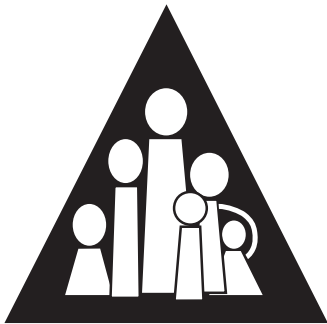
---

# The Multicultural Family Institute

## Spring 2010 Program Offerings

Conference Location: Neumann Conference Center  
146 Metlars Lane, Piscataway, NJ 08854

Monica McGoldrick, LCSW, Director  
Nydia Garcia Preto, LCSW, Associate Director



The Multicultural Family Institute

328 Denison Street,

Highland Park, NJ 08904

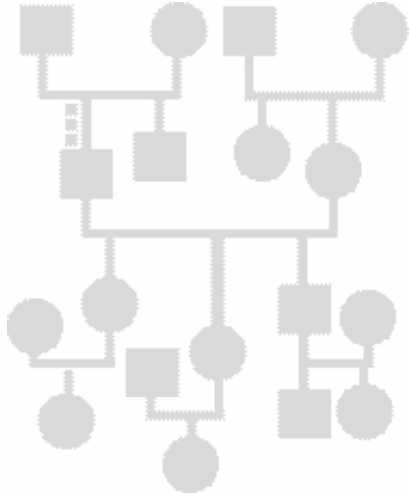
Telephone: 732-565-9010 — Fax: 732-565-0703

email: [youcango@mindspring.com](mailto:youcango@mindspring.com)

website: [www.MulticulturalFamily.org](http://www.MulticulturalFamily.org)

---

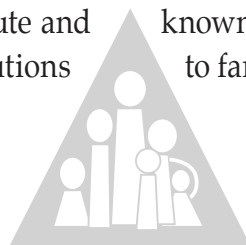
# The Multicultural Family Institute's Philosophy



The Multicultural Family Institute is a non-profit educational institution committed to family therapy training, research and consultation to community institutions from a multicultural systemic perspective. The Institute aims to provide training to therapists and counselors who work with individuals, couples, and families at any point in the life cycle. The Institute is committed to promoting social justice and countering the societal forces that undermine people because of race, gender, culture, class, sexual orientation or disability.

**T**he Multicultural Family Institute (MFI) in Highland Park, New Jersey, was originally developed at the Community Mental Health Center of UMDNJ. After two decades, it was incorporated as a free-standing non-profit educational institution in 1991, offering training and consultation to mental health professionals on family systems intervention from a multicultural perspective. More than two hundred professional psychologists, social workers, and counselors in the region have completed the Institute's multi-year intensive training program and now work in agencies all over the tri-state region, providing services to marginalized populations. The Institute has been successful in recruiting and training mental health professionals from non-dominant cultural groups. In collaboration with the Office of Prevention Services and Research of UMDNJ, MFI has become the Cultural Competence Training Center of Central New Jersey ([www.cctcnj.org](http://www.cctcnj.org)) with a mission to support mental health agencies throughout the region to improve their cultural competence and decrease the disparities in mental health services to underserved populations.

MFI has a long history of providing family therapy, systems interventions, and cultural competence training, focusing on enhancing both knowledge and skills of mental health practitioners and agencies. Faculty include a network of family systems leaders in the field who are affiliated with the Institute and known nationally and internationally for their training and their contributions to family therapy and culture.



*February 5, 2010*

## **Intergenerational Conflicts in Latino Families**

Nydia Garcia-Preto, Sueli Petry, Peter Guarnaccia

**\$100 6 Clinical Contact Hours**

Intergenerational Conflicts in Latino Families: Latino families in this country are often exposed to contextual challenges such as language barriers, intense work demands, limited access to social and health care services, and isolation. These challenges are likely to affect family functioning and often lead to conflicts between parents and children, in couples, and among extended family members. This workshop will focus on the importance of understanding the cultural context in which Latinos live in order to develop effective therapeutic interventions.

**Conference Goal:** To expand participants' understanding of issues in working with Latino families and offer specific suggestions for clinical intervention.

**Target Audience:** LCSW, LPC & other Mental Health Providers - Intermediate to Advanced Level.

**Learning Points:**

1. Examine ways to engage and assess Latino/a clients in therapy.
2. Discuss treatment techniques that take Latino culture into account.
3. Identify appropriate interventions for working with immigrants.
4. Review importance of incorporating language, cultural beliefs in treatment of Latino families.

**Agenda:**

- 9:00 Definitions of Latino and Hispanic
- 10:00 Demographics: Contextualizing experience of Latinos
- 10:30 Break
- 10:45 Immigration and effects on family structure
- 12:00 Lunch
- 1:00 Role of culture in perception of mental health problems, and help seeking patterns.
- 2:30 Break
- 2:45 Techniques for engagement and assessment
- 3:15 Clinical case presentation and discussion
- 3:45 Questions and Answers
- 3:55 Evaluations
- 4:00 Conference Ends



**Nydia Garcia Preto, LCSW**, Associate Director, MFI where she also has a private practice. Widely-known author and trainer on multiculturalism, adolescents, the life cycle, and Latino families. Co-editor of *Ethnicity and Family Therapy* (3rd ed.) and *The Expanded Family Life Cycle* (4th Ed. Due 2010),



**Sueli Petry, PhD**, UMDNJ Children and Family Services. Faculty of MFI. Experience with Latino families and with survivors of sexual abuse. Coauthor: *Genograms, Assessment & Intervention* (3rd ed., 2008), and articles on genograms and Brazilian families.



**Peter Guarnaccia, PhD**, Professor of Medical Anthropology Rutgers University, Core Faculty Cultural Competence Training Center of Central NJ

*March 5, 2010*

## **Hope & Healing: Working with African Americans**

Paulette Hines

**\$100 6 Clinical Contact Hours**

This workshop will provide an overview of cultural values, attitudes and patterns relevant to working effectively with African American families and explore within-group variations linked to class and gender. The workshop will offer guidelines for engagement, assessment, clinical and preventative intervention. Key organizational and larger systems issues that must be addressed will be identified.

**Conference Goal:** Therapeutic intervention with African American families.

**Target Audience:** LCSW, LPC & other Mental Health Providers - Intermediate to Advanced Level.

**Learning Points:**

1. Describe how African American clients typically present when seeking mental health services.
2. Describe the historical and current social/economic/political context of African Americans and the multiple ways that issues of race and racism permeate every aspect of African American's lives.
3. Examine common values, help-seeking behaviors, and the implications for client engagement, assessment and intervention.
4. Identify three guidelines for helping clients deal with anger and rage.

**Agenda**

9:00 Historical and Current Context  
10:30 Break  
10:45 Values, Attitudes and Behavioral Patterns/Implications  
12:00 Lunch  
1:00 Common Treatment Issues  
2:30 Break  
2:45 Considerations for Effective Assessment & Intervention  
3:45 Questions and Answers  
3:55 Evaluation  
4:00 End of Conference



**Paulette Moore Hines, PhD**, Co-Director of the Cultural Competence Training Center, is the Director of the Office of Prevention Services and Research and of Healthy Schools Families and Communities. Dr. Hines is a clinical community psychologist and family therapist. She is a nationally recognized trainer-consultant. She has published and trained widely on African American youth and families as well as culturally sensitive intervention.

# 19th Annual Culture Conference

*April 16 & 17, 2010*

## Can We Talk?

### *Having Difficult Cultural Conversations*



Our 19th Annual Culture Conference will provide a new, challenging format that will provide opportunities for us to further explore difficult conversations about class, race, gender, religion and sexual orientation. Sarah Jones, a Tony Award winning playwright and performer, will open the conference. She assumes the personas of various people of diverse ethnicities and social locations to reveal their perspectives on their life experience in relation to healthcare in America. Her characters convey the powerful effects of the broader racial, ethnic, social, and economic inequities on health and wellbeing. As Jones has said: "Stories speak to the heart, and it is from this place that personal connections, truth, and passion emerge. And it is my experience that these are the forces that can lead to great and profound social change."

The conference will also feature Ken Hardy, Matthew Mock, Maria Root and Elaine Pinderhughes, among many other national experts. This two day intensive, experiential workshop is designed to help us all deepen our understanding and ability to delve into these important and often difficult topics. Together, we can strengthen our commitment to continue fighting for social justice.

*May 7, 2010*

## **A Multicontextual Approach to working with Couples: Love, Sex, Money & Power**

Monica McGoldrick, Nydia Garcia-Preto

### **\$100 6 Clinical Contact Hours**

This workshop will explore clinical intervention with couples from a multicontextual life cycle perspective. The workshop will use clinical examples to illustrate issues regarding money, power, sex, and love in couple relationships through the life cycle. We will consider what difference partners' social location makes including dimensions of race, ethnicity, class, religion, sexual orientation, and gender. A framework for helping partners decide whether to stay in a relationship will be presented.

**Conference Goal:** To expand participants' understanding of the dimensions of couple relationships and offer specific suggestions for clinical intervention.

**Target Audience:** LCSW, LPC & other Mental Health Providers - Intermediate to Advanced Level.

**Learning Points:** This workshop will enable participants to :

1. Assess couple relationships within a multicontextual framework.
2. Help couples assess their marital relationship in the context of their lives
3. Coach partners to focus their behavior to maximize the likelihood of working out their problems.

### **Agenda**

- 9:00 Overview of Couple Relationship issues in the early 21<sup>st</sup> Century within a cultural, community, and life cycle framework.
- 10:30 Break
- 10:45 Presentation of a Framework for helping couples work out their problems and achieve their goals.
- 12:45 Lunch
- 2:00 Discussion of clinical cases to illustrate work with couples.
- 4:00 End of Conference



**Monica McGoldrick, LCSW, PhD.** (h.c.), Director of the MFI, clinical faculty of UMDNJ. Her books include: *Ethnicity and Family Therapy* (3rd ed, 2005), *The Expanded Family Life Cycle* (4th Ed. Due 2010), *Genograms* (3rd ed, 2008), *Living Beyond Loss* (2nd ed. 2004), *Re-Visioning Family Therapy: Race, Culture and Gender in Clinical Practice* (2nd ed. 2008) *Women in Families*, and *You Can Go Home Again* (2nd Ed. For Professionals due 2010).



**Nydia Garcia Preto, LCSW,** Associate Director, MFI where she also has a private practice. Widely-known author and trainer on multiculturalism, adolescents, the life cycle, and Latino families. Co-editor of *Ethnicity and Family Therapy* (3rd ed.) and *The Expanded Family Life Cycle* (4th Ed. Due 2010),

# REGISTRATION



Name \_\_\_\_\_

Address \_\_\_\_\_

City \_\_\_\_\_ State \_\_\_\_\_ Zip \_\_\_\_\_

Employer \_\_\_\_\_

Email \_\_\_\_\_

Phone (\_\_\_\_\_) \_\_\_\_\_ Fax (\_\_\_\_\_) \_\_\_\_\_

**Special Needs:** please call 732-565-9010 to learn about accommodations.

***In the event of a problem or concern contact: Fran Snyder 732-565-9010 x. 201.***

## ***Spring Conferences***

- \$100 Intergenerational Conflicts in Latino Families, February 5, 2010
- \$100 Hope & Healing: Working with African Americans, March 5, 2010
- 19th Annual Culture Conference: Can We Talk?:  
Difficult Cultural Conversations, April 16 & 17, 2010  
by March 10      After March 10
  - Regular      \$200      \$225
  - Student (with copy of ID)      \$170      \$185
- \$100 A Multicontextual Approach to Working with Couples:  
Love, Sex, Money & Power, May 7, 2010

TOTAL AMOUNT      \$ \_\_\_\_\_

Refund less \$30 processing fee if cancelled 2 weeks prior to workshop.

No refund after this deadline.

Make check payable to: The Multicultural Family Institute

Mail to: MFI, 328 Denison Street, Highland Park, NJ 08904

\_\_ MC \_\_ Visa \_\_ Discover Card Number \_\_\_\_\_

Exp. Date \_\_\_/\_\_\_ 3 Digit code on back \_\_\_ Signature \_\_\_\_\_

## **PROFESSIONAL CONTACT HOURS**

**Important Notice:** *Certificate Fee for Professional Contact Hours is \$20 payable by separate check or money order only after the conference. Participants will not be eligible for continuing education credits if they are not on time and present for the entire session.*

*Participants must sign-in and sign-out. Partial credits will not be issued to participants arriving late or leaving early.*

**Certified Counselors:** The Multicultural Family Institute (MFI) is an NBCC Approved Continuing Education Provider (ACEP) No. 6362. MFI may award NBCC approved clock hours for events or programs that meet NBCC requirements

**Social Workers:** The Multicultural Family Institute, provider # 1172, is approved as a provider for social work continuing education by the Association of Social Work Boards (ASWB) [www.aswb.org](http://www.aswb.org), through the Approved Continuing Education (ACE) program.

The Multicultural Family Institute maintains responsibility for the program.

Social workers & Certified Counselors participating in this course will receive credit hours as listed for each workshop.

**To Register On-Line please go to [www.MulticulturalFamily.org](http://www.MulticulturalFamily.org)**

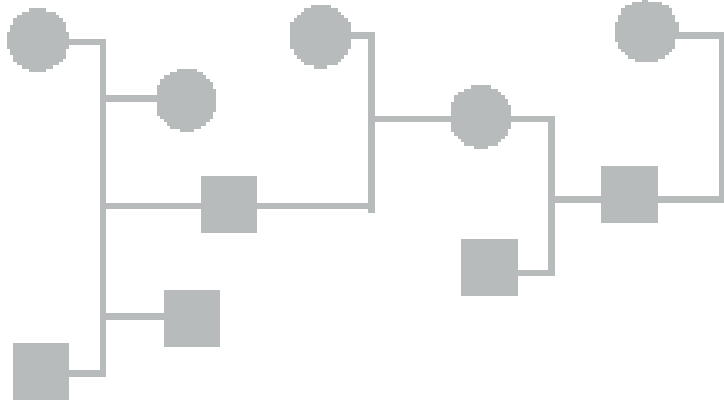
## Multicultural Family Institute

328 Denison Street, Highland Park, NJ 08904

Telephone: 732-565-9010 — Fax: 732-565-0703

[www.MulticulturalFamily.org](http://www.MulticulturalFamily.org)

Non-profit  
US Postage  
Paid  
Red Bank, NJ  
Permit # 411



### ***The Institute's Philosophy***

*The Multicultural Family Institute is a non-profit educational institution committed to family therapy training, research and consultation to community institutions from a Multicultural Systemic perspective. The Institute aims to provide training to therapists and counselors who work with individuals, couples, and families at any point in the life cycle. The Institute is committed to promoting social justice, countering the societal forces that undermine people because of race, gender, culture, class, sexual orientation or disability.*